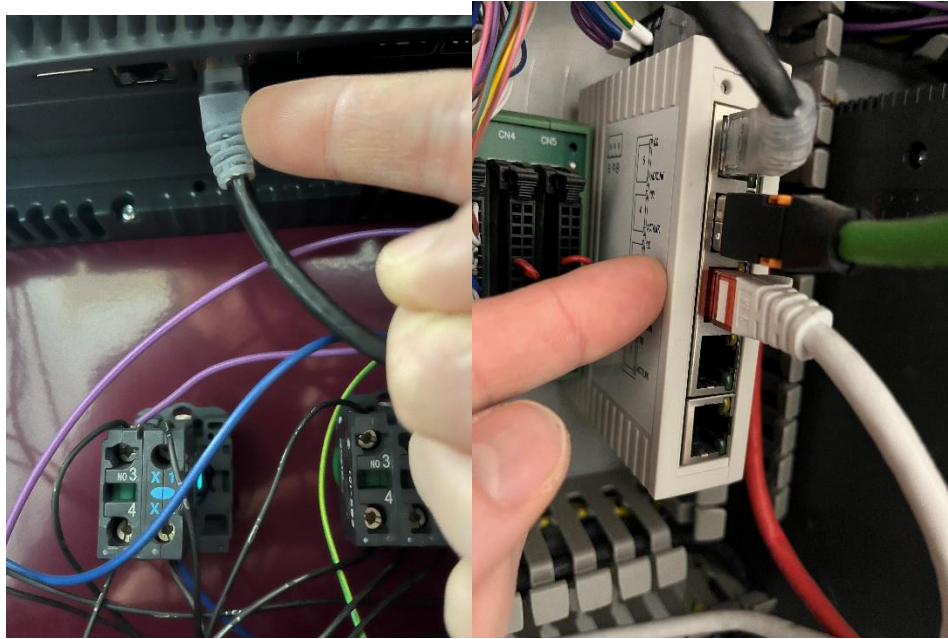
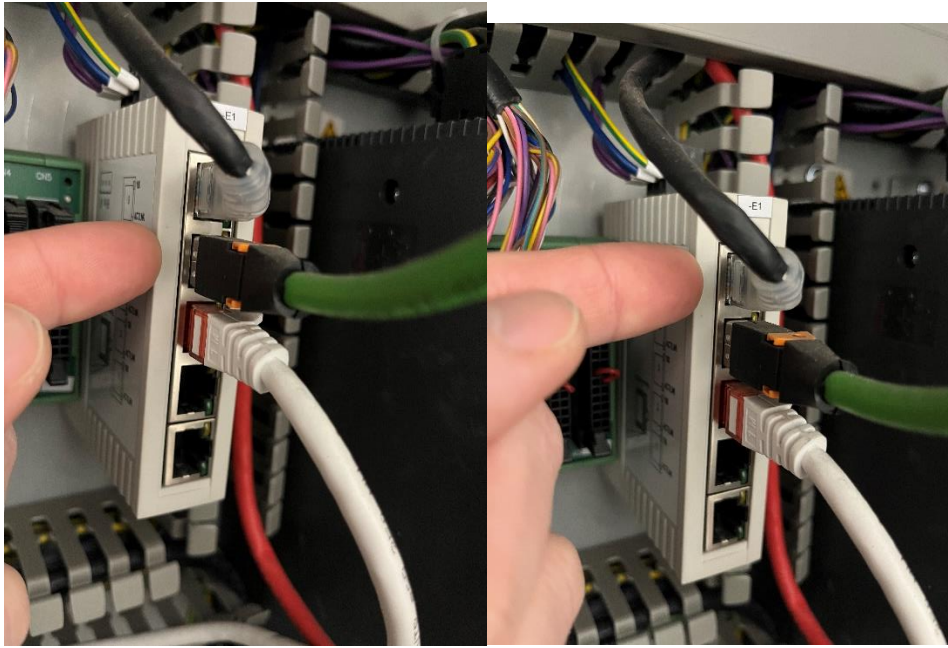


Red boxes

When the WM800 boots, it needs to establish a connection between the HMI (screen) and PLC (Computer) in the electric board. You encountered the presence of red error boxes on the screen, as illustrated in the accompanying image below.

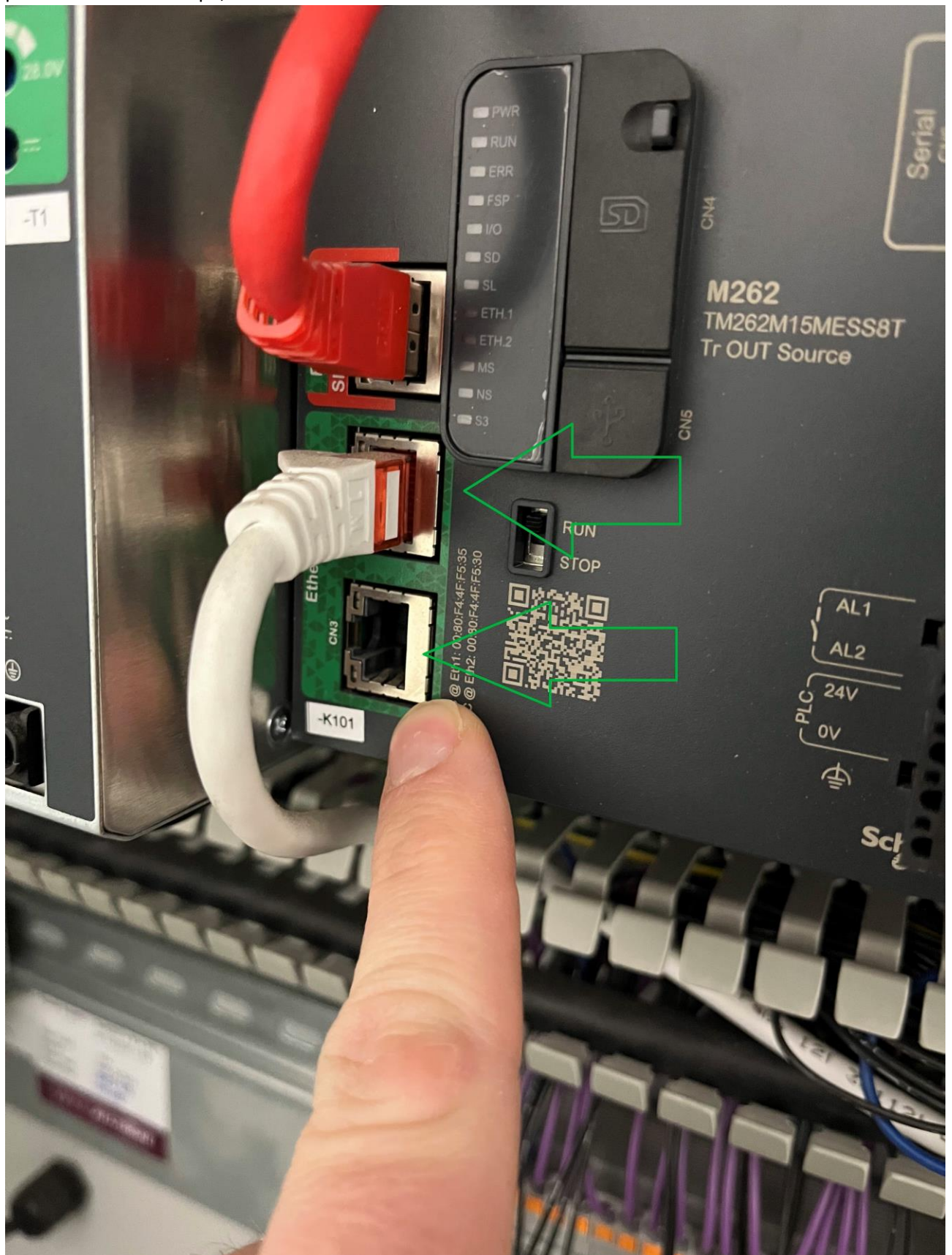


1. The initial step to address this matter involves disconnecting the power cable from the machine and subsequently reconnecting it. In many instances, this course of action proves effective in resolving the issue. Please wait 5 minutes to have to let the machine boot up correctly.
2. If the aforementioned procedure yields no resolution, the next step involves accessing the rear panels of both the machine and the monitor. Thoroughly inspect the connectivity of the pertinent Rj45 cables, ensuring their proper insertion into the corresponding ports of the machine. Proceed by powering off the machine, disconnecting the cables, and meticulously reattaching them to their respective slots one at a time. Reference the provided visuals aids for guidance. Additionally, observe the indicator on the white switch, verifying the presence of light in the port upon rebooting the machine.

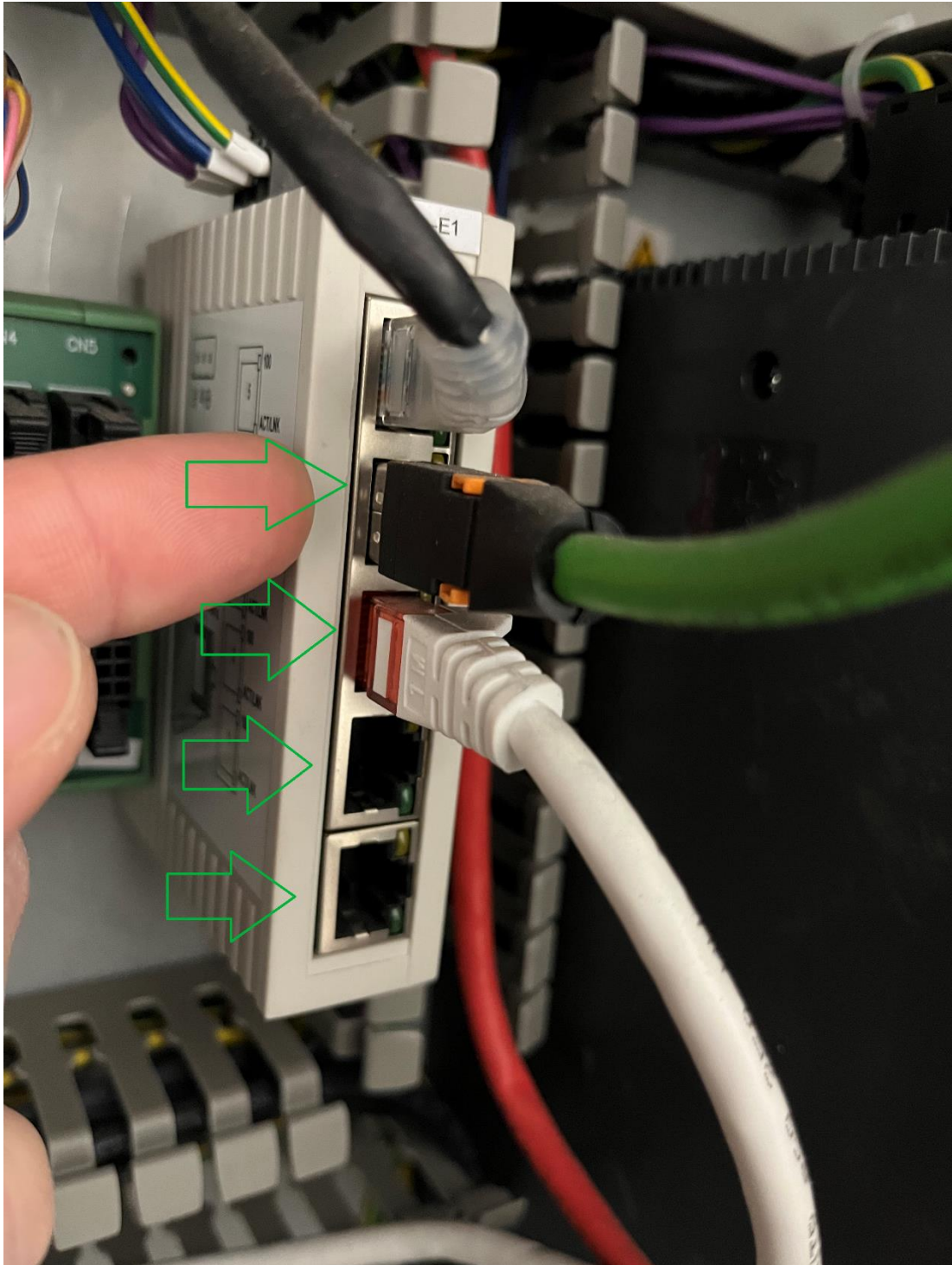




3. If that didn't work, try to switch the cable into the port below, that's marked as shown in the picture. Please see step4, as well.



4. Try to switch the ethernet cables around in the switch, as shown in the picture below.



5. If that didn't work, please follow the video that is attached to this post. The video shows how you should unplug and plug the network card back into the drive.
6. If this does not solve the issue, please create a ticket, and mention, that the above solution has been conducted.