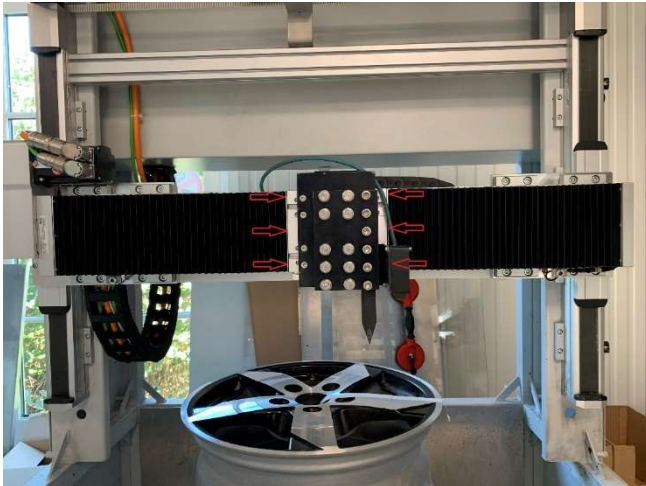


## Axis cleaning

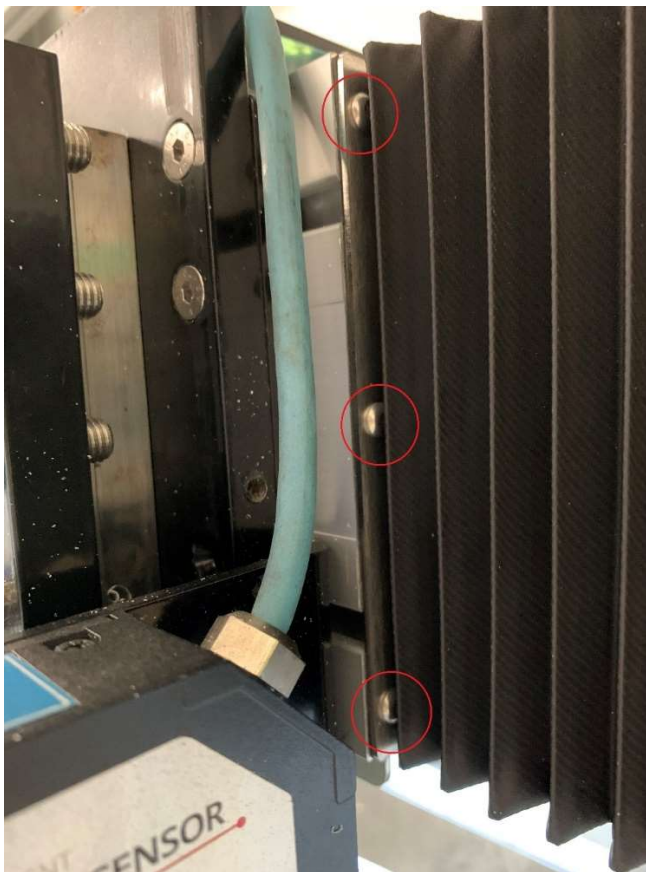
We recommend cleaning the X-Axis behind the tool holder frequently.

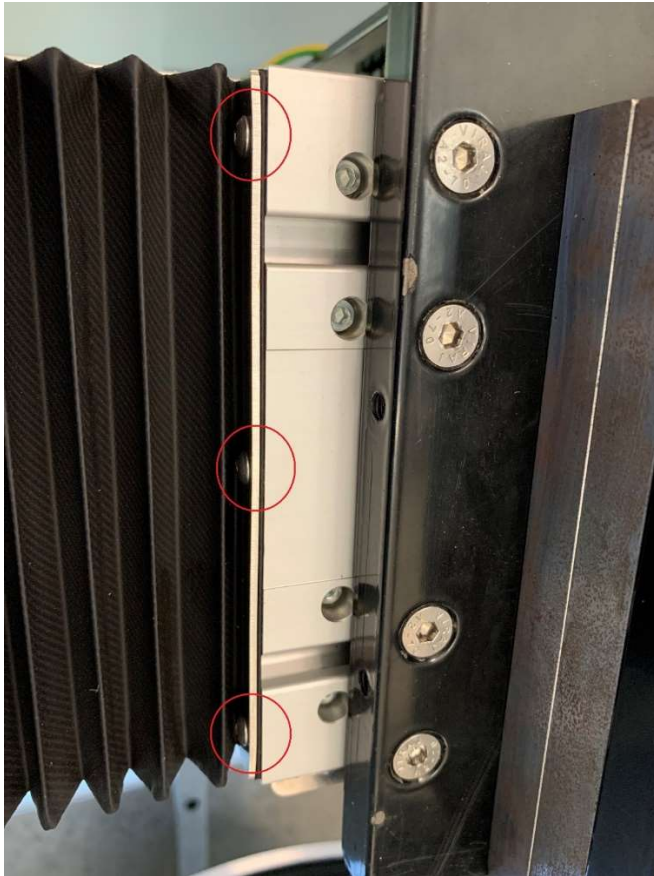
Please follow the following steps:

1. Put the axis in loading position
2. Open the door
3. Switch off the power by removing the plug from the socket
4. Wait for 5 min to be sure the power is completely down
5. Locate the screws in the middle of the axis, see picture (red arrows)



6. Use a screwdriver TX10 to remove the screws





7. Carefully remove the plastic cover from the axis



8. Use a vacuum cleaner to remove all chips from the spindle and axis
9. Put the plastic cover back on the axis
10. Mount the screws using a screwdriver TX10
11. Switch on the machine by plugging in the plug into the socket
12. Close the door
13. Follow the steps as mentioned on the screen